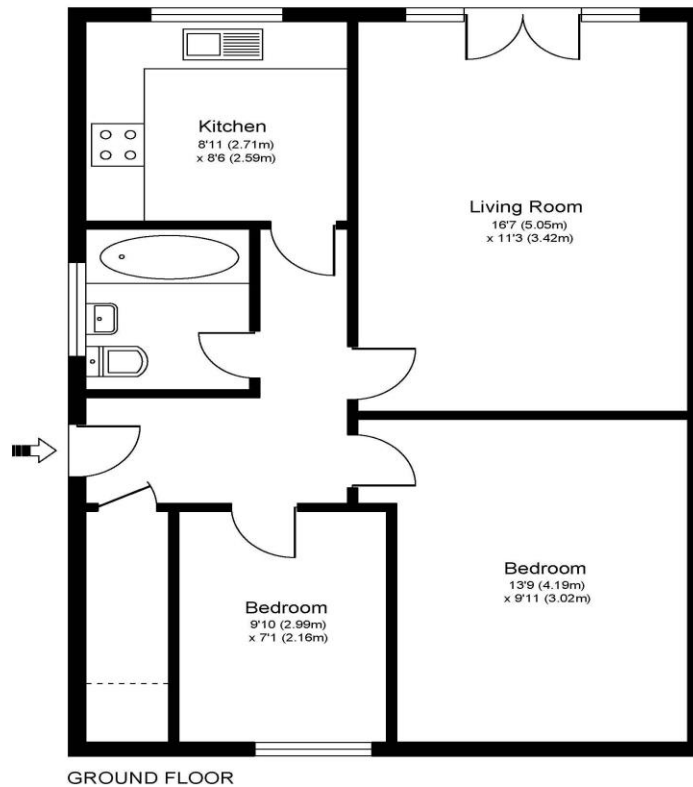




**22 Fordwater Road Chertsey Surrey KT16 8HS**

**£1500pcm + Initial deposit**





Approximate Gross Internal Floor Area: 57 m sq / 610 sq ft

Whilst every attempt has been made to ensure the accuracy of the floor plan contained here, measurements of doors, windows and rooms are approximate and no responsibility is taken for any error, omission or misstatements. These plans are not to scale and are for representation purposes only as defined by RICS Code of Measuring Practice and should be used as such by any prospective purchaser. Specifically no guarantee is given on total square footage of the property if quoted on this plan. Any figure given is for initial guidance only and should not be relied on as a basis of valuation.

A ground floor, two-bedroom, maisonette with large private garden and parking to the rear. Internally this is a good home with two bedrooms, all easily accessible on the ground floor. The kitchen and living room are separate and the living room opens out onto your private garden. The kitchen is modern and has nice white goods. There is a bathroom and additional understairs storage. Externally the rear garden is a great size and space, there is also a garden shed. To the rear is hardstanding parking of which you get one space. Well, located in Chertsey, close to the local Health Centre and a good selection of local schools and amenities. Chertsey is popular with those that commute via roads with easy access to the M25. Junction 11. St Peters Hospital is also not far away. EPC Rating C and Council Tax Band C should make this a good cost-effective home.



**AGENTS NOTES:** These details do not constitute any part of an offer or contract. In issuing them we do not have any authority to give any warranty or representation whatsoever in respect of this property. These details are provided without any responsibility on our part or the part of the vendors. No statements in these details are to be relied upon as representations of fact and purchasers should satisfy themselves by inspection or otherwise as to the accuracy of the statements contained therein.

**Equipment:** We have not tested the equipment or central heating system mentioned in these particulars and purchasers are advised to satisfy themselves as to their working order and condition.

**Measurements:** Great care is taken when measuring but measurements should not be relied upon for ordering carpets, equipment, etc.